

OECD for Patients WG

Enhancing Patient Involvement in Cancer Care and Research

Navigating Challenges in Home-Based Cancer Care: Patient and Provider Perspectives

 Ivica Belina

 12 June 2025



Croatia



Croatia

- 3,86 inhabitants (2023)
- Croatian Cancer Registry – population – based (since 1959)
- In 2022. 26.105 newly diagnosed, 13 865 men and 12 240 women
- 37% under age of 65
- 12 900 people died from cancer (7 364 M, 5 536 W)
- 16 820 medical doctors
- 4 300 in university and clinical hospitals, 3400 in general hospitals, 2 300 in primary care
- 32 440 nurses, lack of 4000
- 47 hospitals owned by the state
- There is no oncology network, and no accredited institutions
- Digitally not connected



Prevention Programs

- Breast cancer screening since 2006
- Colorectal screening since 2007
- Cervical cancer screening since 2010
- Lung cancer screening since 2020
- Prostate Cancer screening since 2024 (City of Zagreb)
- Melanoma screening 2023-2026



National Cancer Plan 2020-2030

- Adopted in 2020, Croatia was the last country in the EU
- It supposed the development of the national Oncology Institutions Network, national Cancer Database connected to the Cancer Registry, outcome tracking, patient pathways, comprehensive cancer care
- One Action Plan in 2024, no evaluation
- Still not implemented
- Significant disparities in cancer care within the country



What it means to patients?



What it means to patients?

- Getting diagnosed and treated locally
- Long waiting time for diagnosis, decision about the treatment and the start of treatment, waiting time for some procedures
- Lack of information
- Lack of supportive care
- When the expertise in the local hospital is exhausted, the patients are sent to bigger cancer centers, but the disease is also progressing
- Poor access to end of life care
- Additional burden for the families/informal carers



What it means to HCP's?



What it means to HCP's?

- Primary care doctors have no control over their patients treatment/pathway
- Primary HCP's in palliative and end of life care feel overwhelmed
- Oncology and surgery specialists in small hospitals feel competent to make decisions and treat patients
- Oncology specialists feel frustrated because they treat patients in advanced stages of the disease
- Uncertain outcomes
- Nurses specialist educational program just started





Organisation of European Cancer Institutes - EEIG



But...



Organisation of European Cancer Institutes - EEIG



Institute for Personalized Medicine and National Laboratory for Genomic Profiling

- All metastatic patients have access to CGP
- 5000 patients per year, with perspective up to 10 000 tests



„Be the guiding voice „

- Nurse navigators for cancer patients at the National Lung Clinic project



Institute for the Integrated and Palliative Care



Palliative care in the community

- All 20 counties and City of Zagreb have mobile palliative teams for care in the community



Psychology support

- Strong development of psycho-oncology



New role of the GP's

- Active role in the prevention programs and in home care of cancer patients



Patient Pathways

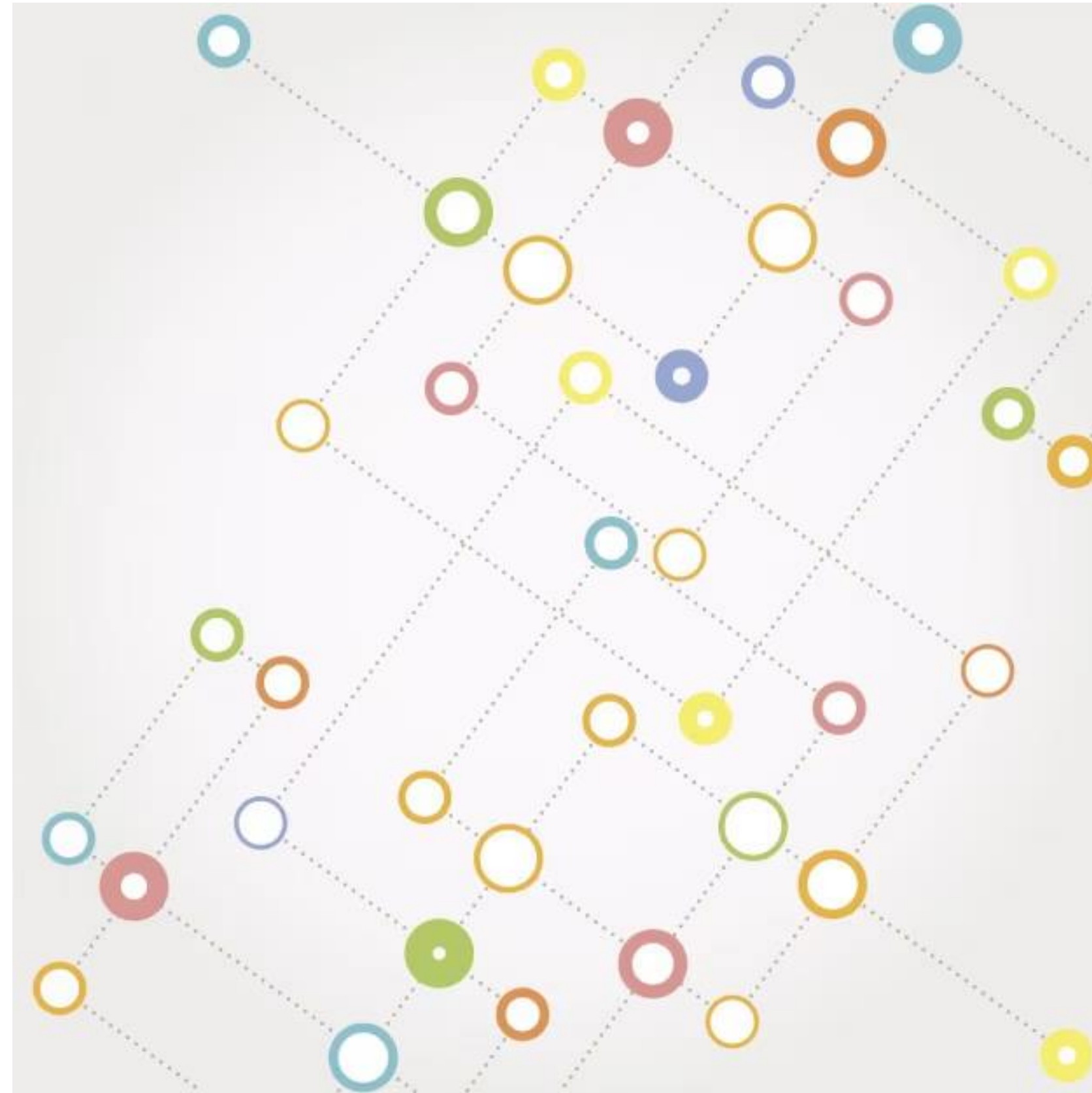
- Cancer patient organizations developed 10 patient pathways according to the national guidelines for 10 most common cancer sites within **Cancer Care Beacon** project



Cancer patient organizations

- Information, education, support for patients and families
- Psychological support
- Nutrition support
- Transport to the therapy sites
- Palliative care
- Collaboration with HCP's
- Collaboration with MEP's
- Advocacy
- Media presence





Organisation of European Cancer Institutes - EEIG





THANK YOU

for your attention

Ivica Belina



[Your organisation]

